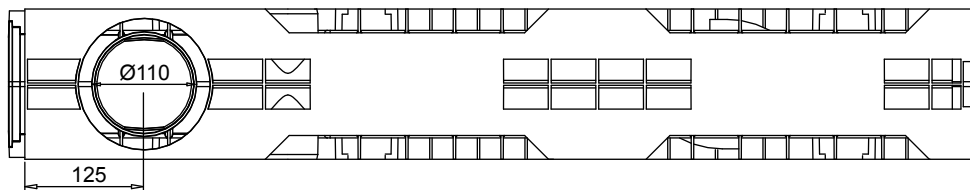


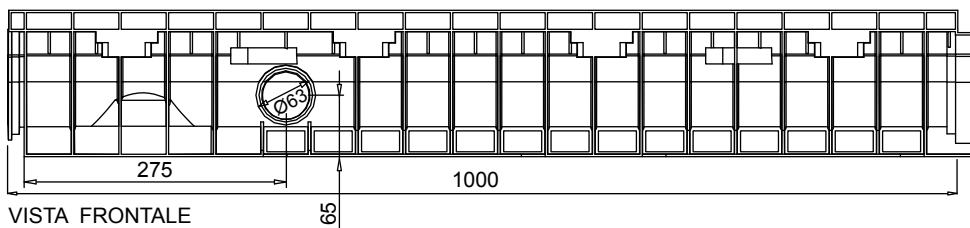
**MUFLEDRAIN****NEW VIP<sub>20</sub>****MUFLE**  
SISTEMI DI CONDUZIONE DI ACQUA E LUCEIGQ P026  
UNI EN 1433Codice prodotto  
702001

rev. 00

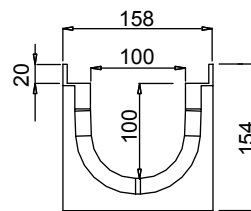
## Canaletta in PE-HD VIP<sub>20</sub> 100/100 NEW



VISTA DAL BASSO



VISTA FRONTALE



VISTA LATERALE

Tenuta all'acqua: per assicurare la tenuta stagna delle canalette, si consiglia l'utilizzo di un adesivo sigillante bituminoso. A garanzia completa e duratura dell'assenza di perdite attraverso i giunti delle canalette, si può provvedere alla saldatura a caldo dei giunti stessi.

## Scheda tecnica

### Dimensioni e caratteristiche

NB: Le dimensioni ed i pesi sono soggetti alle normali tolleranze di fabbricazione

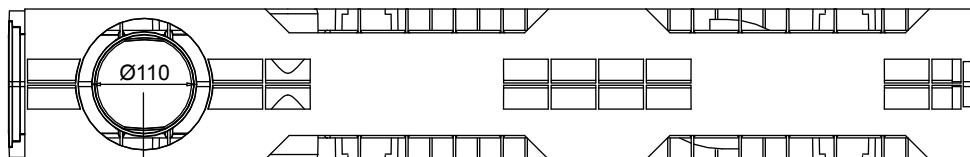
|                                   |                    |
|-----------------------------------|--------------------|
| Lunghezza (mm)                    | 1000               |
| Larghezza esterna (mm)            | 158                |
| Altezza esterna (mm)              | 154                |
| Larghezza interna (mm)            | 100                |
| Altezza interna (mm)              | 100                |
| Scarichi                          | 2 x Ø63 e 1 x Ø110 |
| Materiale                         | PE-HD              |
| Peso (Kg)                         | 2.05               |
| Sezione di drenaggio (cmq)        | 89.56              |
| Capacità (dm <sup>3</sup> =litri) | 8.95               |

### Griglie

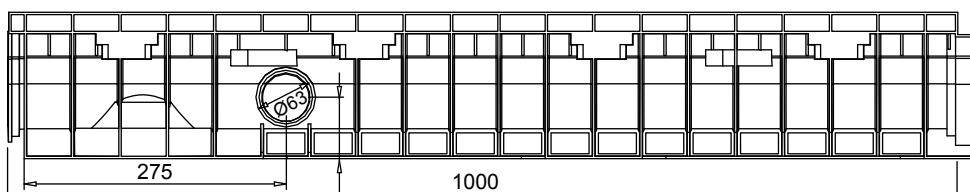
|                                  |                          |                  |
|----------------------------------|--------------------------|------------------|
| Pioli                            | in acciaio zincato, inox | Classe A15       |
| Maglia quadra 33x33              | In acciaio zincato, inox | Classe B125-C250 |
| Maglia antitacco 33x15           | In acciaio zincato, inox | Classe B125-C250 |
| Maglia                           | in ghisa sferoidale      | Classe B125-C250 |
| Fessura 20 mm.                   | in ghisa sferoidale      | Classe C250-D400 |
| Fessura 6 mm.                    | in ghisa sferoidale      | Classe C250      |
| Ecovip                           | Polietilene alta densità | Carrabile        |
| Ecovip con fessura longitudinale | Polietilene alta densità | Carrabile        |
| Copertura cieca                  | Polietilene alta densità | Carrabile        |

Il prodotto deve essere posto in opera secondo le specifiche della MufleSystem s.r.l., le istruzioni sono disponibili sul nostro sito internet.

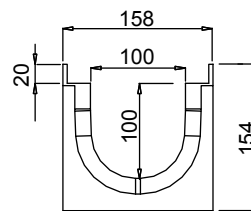
## Channel in HD-PE VIP<sub>20</sub> 100/100 NEW



BOTTOM VIEW



LATERAL VIEW



FRONT VIEW

### New.

1. The new muffedrain channels can also be joined together with the gratings/covers already installed on in order to reduce installation times.
2. The new muffedrain channels have new fixing-to-channels systems, as the inner side HD-PE pins and the unreleased quick fastener clips, for an easy and safe gratings installation.
3. The inner surface guarantees an high roughness index and do not have any external passing hole in order to avoid and water infiltration.

Watertight: To ensure the watertight of the channels, it is advisable to use an adhesive bituminous sealing. As a complete and long lasting guarantee of absence of leakages through the joints of the channels, it is possible to hot-solder the joints

## Data Sheet

### Dimensions and features

N.B. Dimensions and weights are subjected to the normal tolerances of the manufacturing

|                                     |                    |
|-------------------------------------|--------------------|
| Length (mm)                         | 1000               |
| External width (mm)                 | 158                |
| External high (mm)                  | 154                |
| Internal width (mm)                 | 100                |
| Internal high (mm)                  | 100                |
| Outlets                             | 2 x Ø63 - 1 x Ø110 |
| Material                            | HD-PE              |
| Weight (Kg)                         | 2.05               |
| Drainage section (cm <sup>2</sup> ) | 89.56              |
| Capacity (dm <sup>3</sup> = litres) | 8.95               |

## Gratings

|                          |                             |                        |
|--------------------------|-----------------------------|------------------------|
| Slotted                  | galvanized, stainless steel | Class A15              |
| Mesh 33x33               | galvanized, stainless steel | Class B125-C250        |
| Mesh 33x15               | galvanized, stainless steel | Class B125-C250        |
| Mesh                     | ductile iron                | Class B125-C250        |
| Slot 20 mm               | ductile iron                | Class C250             |
| Slot 6 mm                | ductile iron                | Class C250             |
| Longitudinal slot "L"    | galvanized, stainless steel | Class from A15 to C250 |
| Ecovip                   | HD_PE                       | Driveway               |
| Ecovip longitudinal slot | HD_PE                       | Driveway               |
| Closed cover             | HD_PE                       | Driveway               |

The products have to be installed according to MufleSystem's specifications (available on our web site)