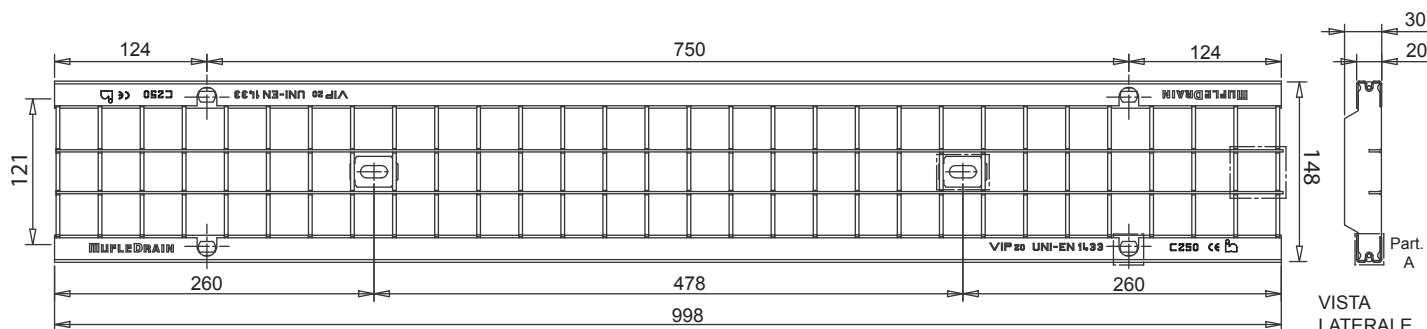


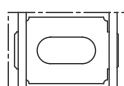
## Griglia a maglia quadra in acciaio zincato e inox VIP20 100 Classe C250\*



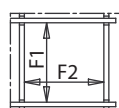
VISTA DALL'ALTO

VISTA  
LATERALE

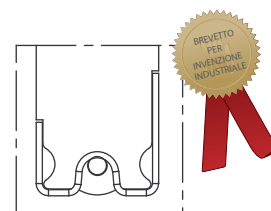
\*Secondo la Norma EN 1433



Particolare  
Pastrino di fissaggio



Particolare  
Maglia quadra



Part. A

Il prodotto deve essere posto in opera secondo le specifiche della MufleSystem s.r.l., le istruzioni sono disponibili sul nostro sito internet.

## Scheda tecnica

### Dimensioni e caratteristiche

NB: Le dimensioni ed i pesi sono soggetti alle normali tolleranze di fabbricazione

Lunghezza (mm)	998
Larghezza esterna (mm)	148
Altezza (mm)	20
Ingombro (mm)	30
Dimensione aperture (F1xF2)	31.0x31.0
Materiale	Acciaio S235JR (Fe 360B) / Inox AISI 304
Peso (Kg)	4.60
Superficie di drenaggio (dm <sup>2</sup> )	8.50
Sistema di fissaggio	Barretta
Finitura superficiale	Zincatura / ***
Resistenza (Norma UNI EN 1433)	C250

### Applicazioni

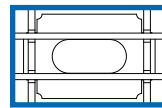
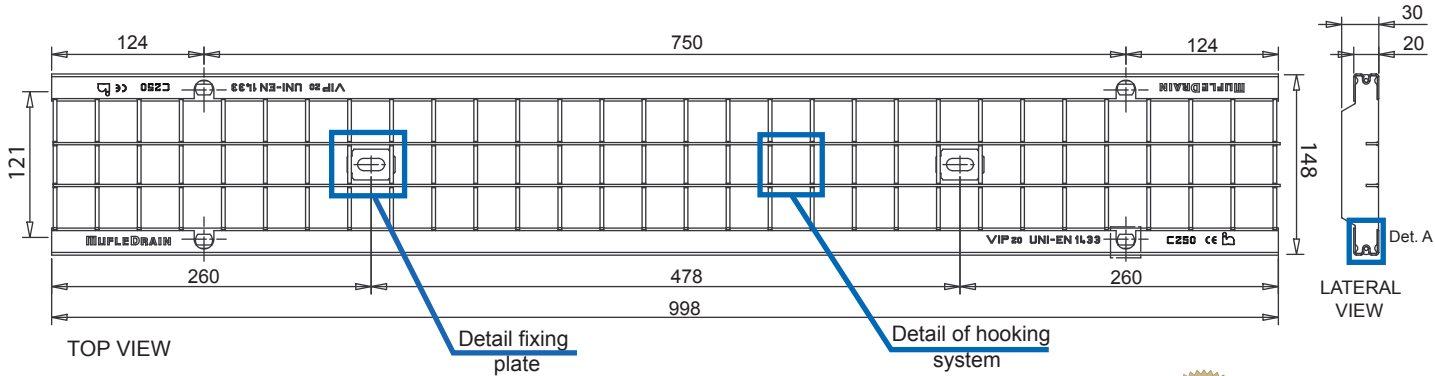
Acciaio zincato	Acciaio INOX
Accessi ad aree di sosta	Parcheggi
Bordo strada	Bordo strada
	Ambienti alimentari
	Ambienti chimicamente aggressivi

### Valida per canaletta

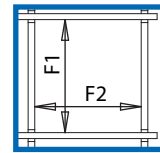
Vip20 100/160
Vip20 100/100

## Square mesh grating in galvanized stainless and steel VIP<sub>20</sub> 100 Class C250\*

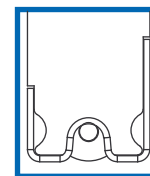
azienda certificata ISO 9001:2015  
numero verde fax 800 234495



Detail fixing plate



Detail of square mesh



Det. A



\*In accordance to the norm EN 1433

The product have to be installed according to MufleSystem's specifications (available on our web site)

## Data Sheet

### Dimension and feautres

NB: Le dimensioni ed i pesi sono soggetti alle normali tolleranze di fabbricazione

Length(mm)	998
Total width (mm)	148
Total height (mm)	20
Depth (mm)	30
Slot height (F1xF2)	31.0 X 31.0
Material	Galvanized Steel DX51D/Stainless steel AISI 304
Weight (Kg)	4.60
Draining surface (dm <sup>2</sup> )	8.50
Fixing system	Tie-rod
Surface finishing	Galvanization / ***
Resistance (Norm UNI EN 1433)	C250

### Application

Galvanized steel	Stainless steel
Kerbs	Kerbs
Historical town centres (slow traffic)	Historical town centres (slow traffic)
Parking areas	Parking areas
Parking decks	Parking decks
	Areas with low-loadv transit in food factories
	Areas with low-load transit in chemically aggressive environments

### For channel

Vip20 100/160  
Vip20 100/100

MufleSystem s.r.l. - Via dell'Industria, 7 - 62017 porto recanati - mc - italy - tel. +39 071 9799122 - fax +39 071 7592275 - info@mufle.com - www.mufle.com  
p.iva it 01678850437 - cod. fisc. 01678850437 - cap. soc. € 500,000,00 interamente versato - C.C.I.A.A. MC 01678850437 - REA n. 172231